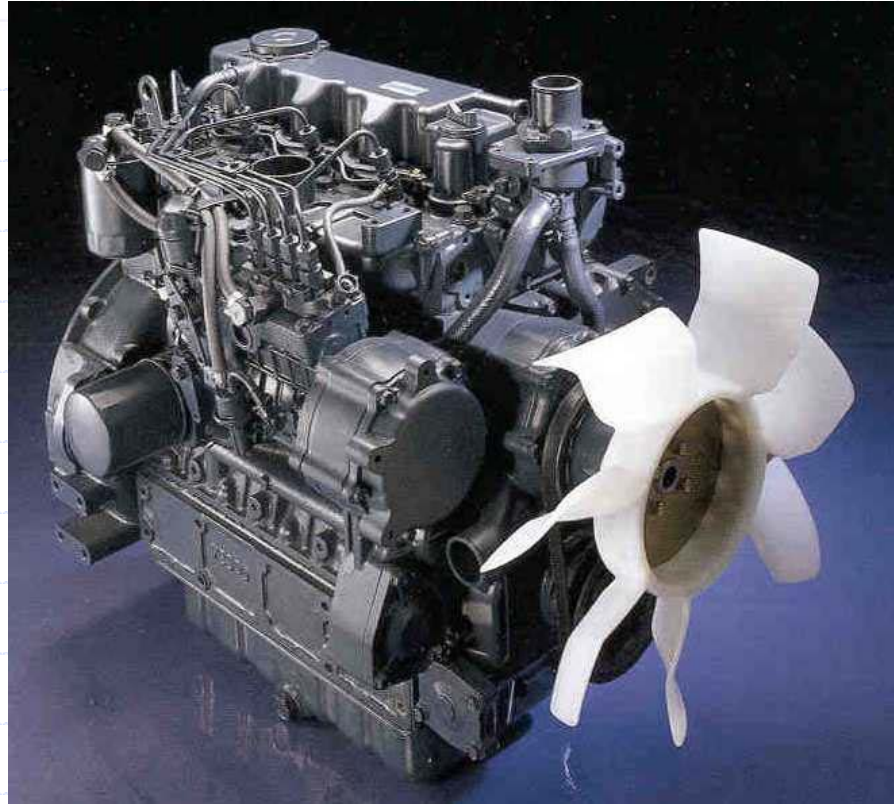


Kubota Engine Training



Kubota

KUBOTA ENGINE AMERICA
Service Training

Engine Training

- ❖ Engine Identification
- ❖ Diesel vs. Gaseous Fueled Engines

Kubota Engine Identification

How to Read the Model Name

❖ Diesel Engines

❖ Example: V1505-T

❖ First Letter =
Number of Cylinders

- E = Eins = 1 Cyl
- Z = Zwei = 2 Cyls
- D = Drei = 3 Cyls
- V = Vier = 4 Cyls
- F = Funf = 5 Cyls

❖ Gaseous Fueled Engines

❖ Example: WG752

❖ First Letters = Type of
fuel system

- WG = Water-cooled Gasoline (and all current gaseous fueled engines)
- DF = Dual Fuel (Gas and Propane)(Older engines)
- DG = Natural Gas or Propane only (Older)

Kubota Engine Identification

How to Read the Model Name

❖ Diesel:

❖ Example: V1505-T

- 1505 is approximate displacement

Z482 = 479 cc

D722 = 719 cc

D1105 = 1123 cc

V1505 = 1498cc

V2203 = 2197 cc

V2607 = 2615 cc

V3800 = 3769 cc

❖ Gaseous Fueled

❖ Example: WG752

- 752 is approximate displacement

WG752 = 740 cc

WG972 = 962 cc

WG1605 = 1537 cc

Kubota Engine Identification

How to Read the Model Name

- ❖ Examples: V1505-T, WG752
- ❖ Last Digit(s) are Series of Engine:
 - Super Mini: Z482, Z602, D722, D902
 - Super Mini Gas: WG752, WG972
 - 05 Series: D1005, D1105, D1305, V1505
 - 05 Series Gas: WG1605
 - 03 Series: D1803, V2003, V2203, V2403
 - 07 Series: V2607, V3307
 - V3 Series: V3300, V3600, V3800

Kubota Engine Identification

How to Read the Model Name

- ❖ Example: V1505-T, WG752-GL
 - T = Turbocharged Engine
 - TI = Turbocharged Intercooled Engine
 - DI = Direct Injection Engine
 - CR = Common Rail Injection
 - G = Gasoline
 - L = Liquid Propane
 - N = Natural Gas
 - GL = Dual Fuel (Gas & Propane)

Finding the Engine Serial Number

- ❖ Serial Number Format
- ❖ All Engines
- ❖ Super Mini Series
- ❖ 05 Series
- ❖ 03 and 03-M Series
- ❖ 07 Series
- ❖ V3 Series

6-Digit Serial Number Format (Before June, 2012)

The Serial Number is the identification number for the engine. It indicates the Year and Month of manufacture as follows.

Year of Manufacture

Year	1998	1999	2000	2001	2002	2003	2004	2005	2006	2007	2008	2009	2010
Code	W	X	Y	1	2	3	4	5	6	7	8	9	A
Year	2011	2012	2013	2014	2015	2016	2017	2018	2019	2020	2021	2022	2023
Code	B	C	D	E	F	G	H	J	K	L	M	N	P

Month of Manufacture

Serial Number	Jan	Feb	Mar	Apr	May	Jun	Jul	Aug	Sep	Oct	Nov	Dec
0001 ~ 9999	A	C	E	G	J	L	N	Q	S	U	W	Y
0001 ~ 9999 (actual 10000 ~ 19998)	B	D	F	H	K	M	P	R	T	V	X	Z
A001 ~ A999 (actual 19999 ~ 20997)	B	D	F	H	K	M	P	R	T	V	X	Z

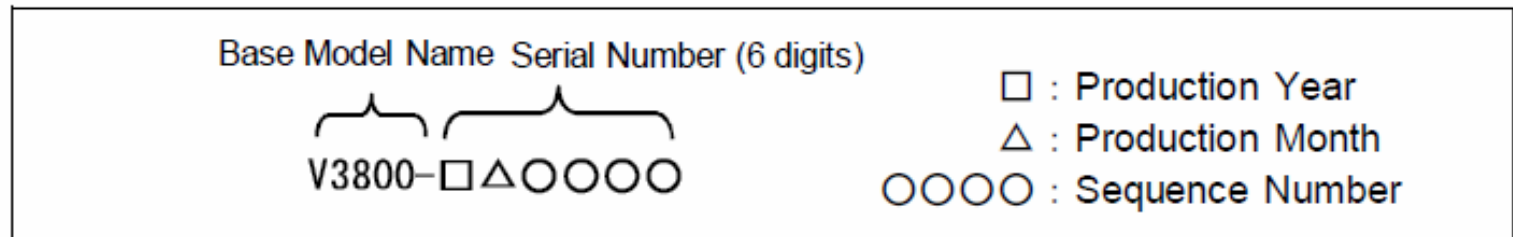
Example: **D722-AC1234** “A” indicates **2010** and “C” indicates **February**. So the serial number (**AC1234**) indicates the engine was the **1234th** engine built in **February 2010**.



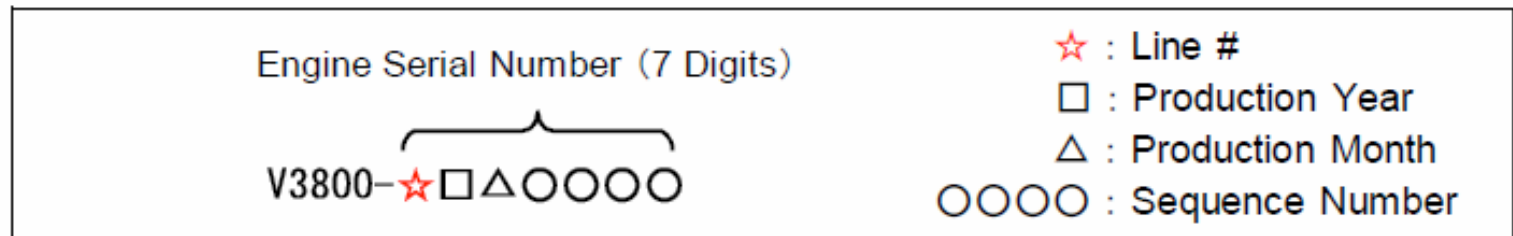
7-Digit Serial Number Format (Starting June, 2012)

Adding additional digit at beginning of serial number

Before
June
2012



Starting
June
2012



Production Plant	Sakai			Rinkai			Tsukuba		PTKI	KET
Line	05	V3	08	SM	Air Cooled Gasoline	Water Cooled Gasoline/HD	03	07		
★ Line Number	1	2	3	4	5	6	7	8	A	B

Serial Number Location

All Current Engine Models

- ❖ Engine Model
- ❖ Engine Serial Number
- ❖ Model Code

❖ Don't use the Emissions Label!



Serial Number Location Super Mini Series

- ❖ Silver label on valve cover
- ❖ OR
- ❖ Stamped in crankcase near injection pump



Serial Number Location

05-Series Engines

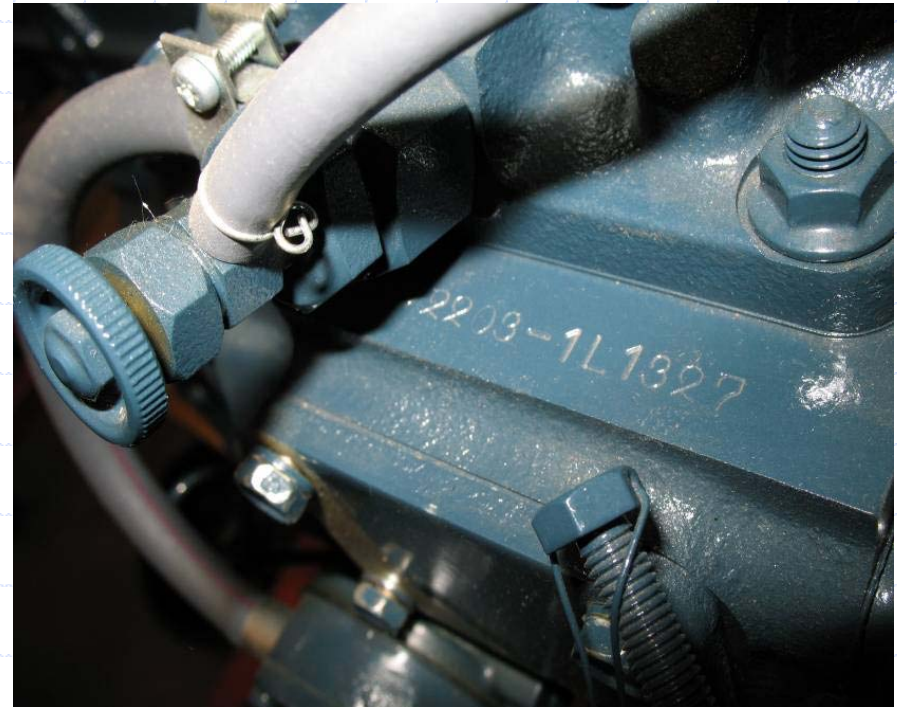
- ❖ Silver label on valve cover
- ❖ OR
- ❖ Stamped into crankcase under the exhaust manifold at the rear of the engine



Serial Number Location

03 or 03-M Series

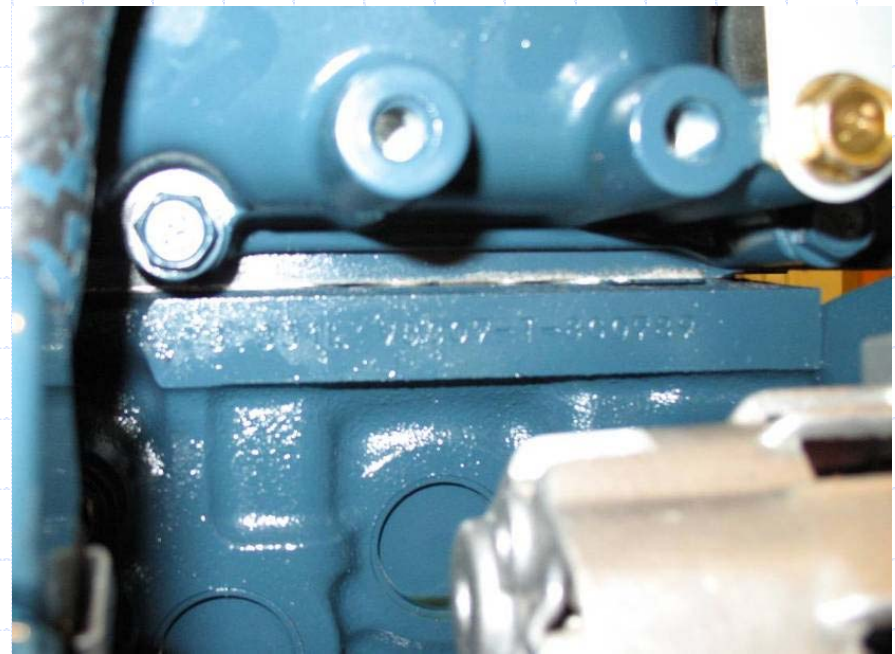
- ❖ Silver label on valve cover
- ❖ OR
- ❖ Stamped into crankcase at injection pump



Serial Number Location

07-Series Engines

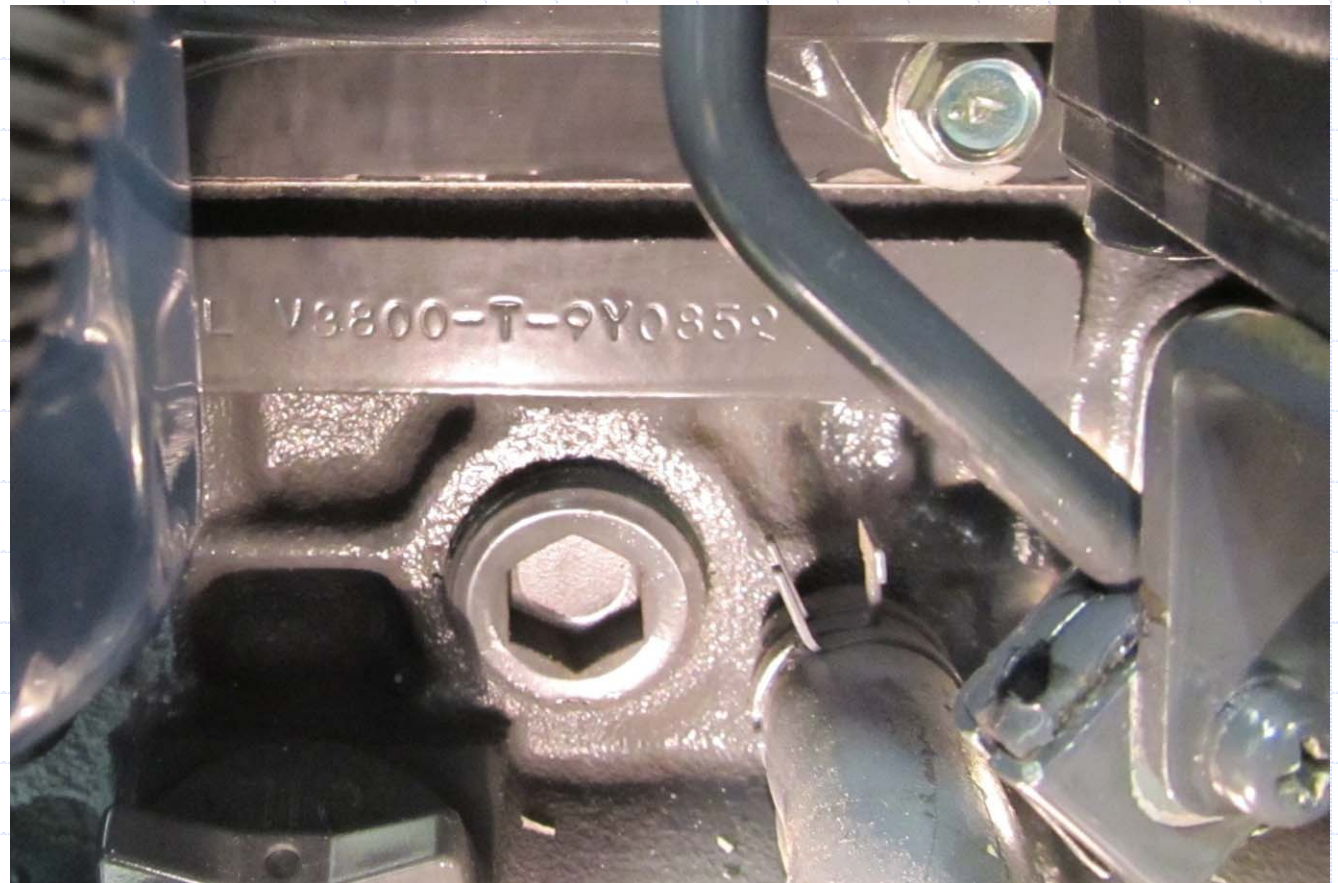
- ❖ Silver label on valve cover
- ❖ OR
- ❖ Stamped into crankcase below intake manifold at front (above alternator)
- ❖ **NOT** on Injection Pump housing



Serial Number Location

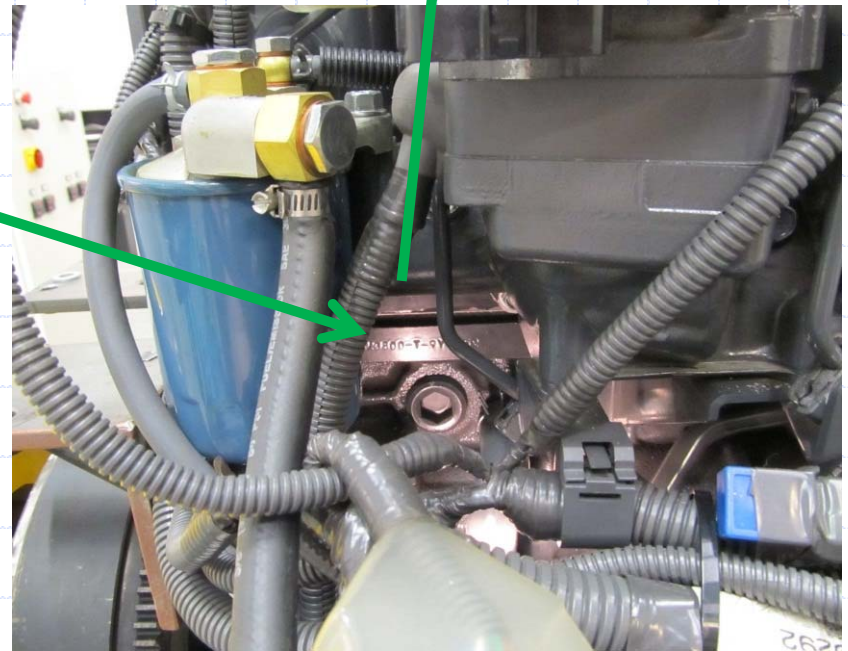
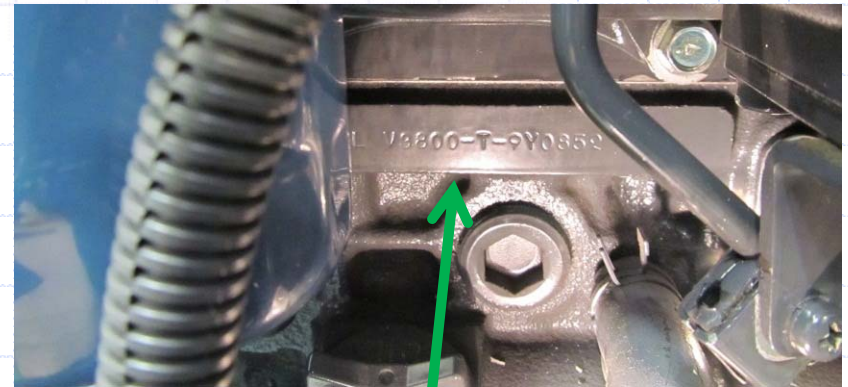
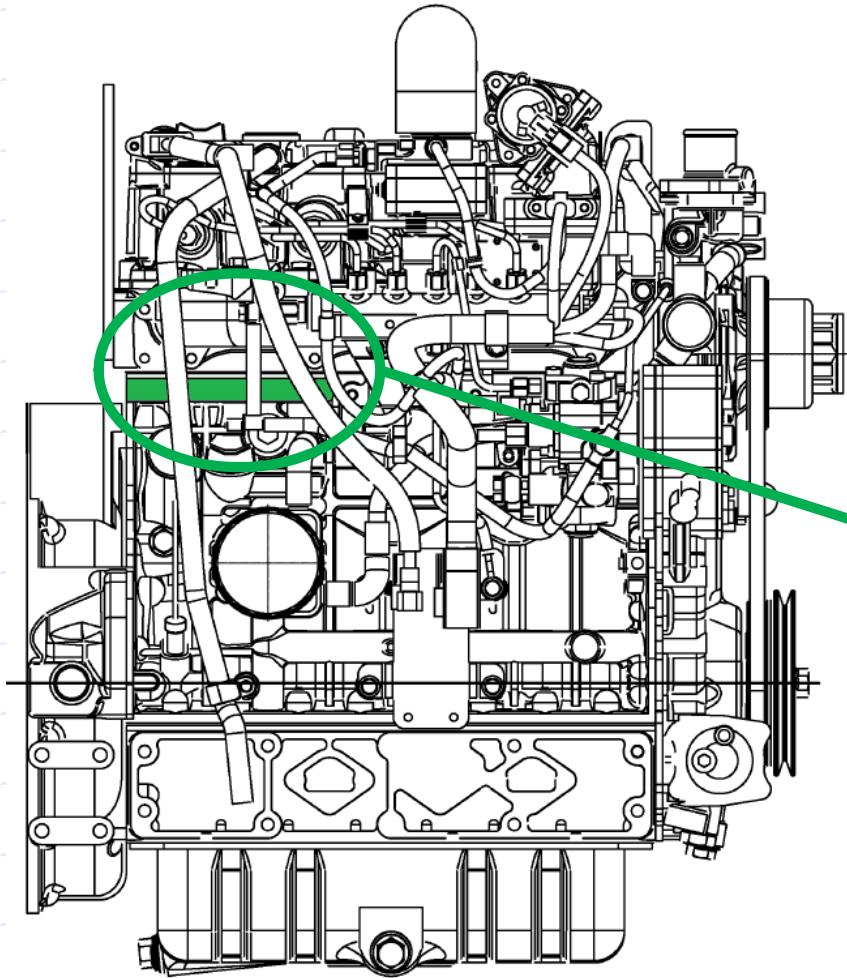
V3-Series Engines

- ❖ Silver Label on Valve Cover
- ❖ OR
- ❖ Stamped into crankcase below intake manifold at rear



Serial Number Location

V3-Series Engines



Sample Emissions Label

- ❖ European Label
 - Shows Approval number for Europe

- ❖ US EPA Label
 - Includes valve clearance and injection timing data

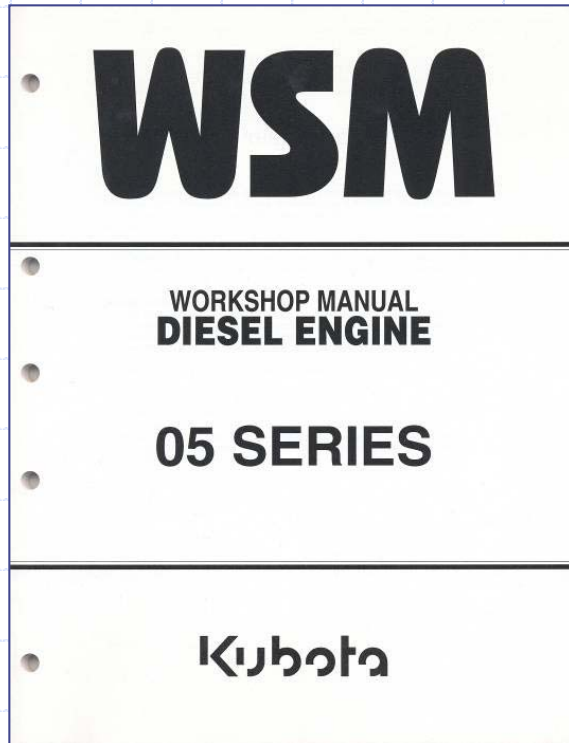
European Label



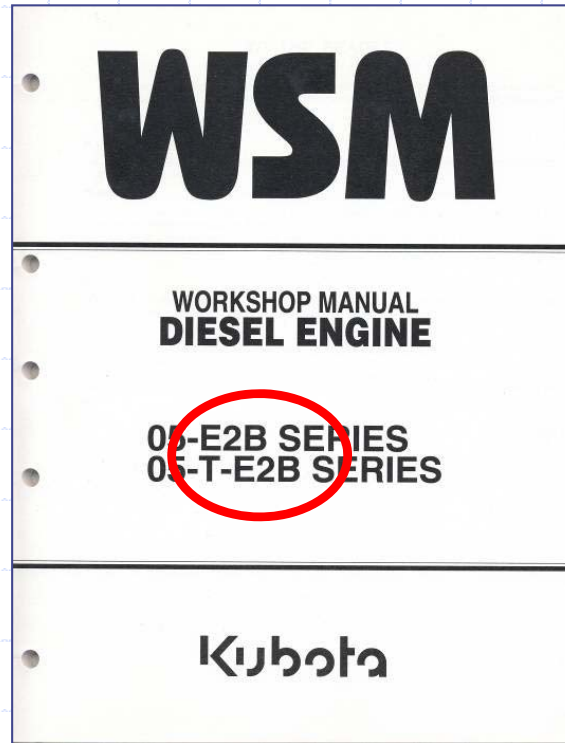
On Label: E = Tier 1 (EB); ES = Tier 2 (E2B); ET = Tier 3/4i (2008) (E3B); EF = Tier 4i/4f (2012, 2013)

Workshop Manual

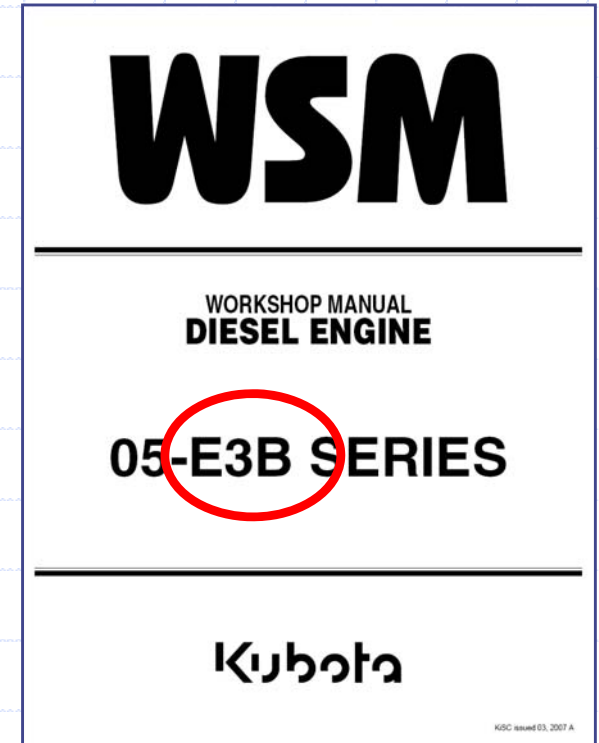
Which Manual should I use?



Tier 1 and
earlier engines



Tier 2 Engines



Tier 3 / 4i
2008 Engines